

The Editor's Notes



The blizzard of February 2011 is still raging outside, and it's time to get the newsletter out. Last month, I was in Waco, Texas working at the site of a new coal fired power plant. I was there for 11 days. With the weekend off, I drove over to McGregor to photograph the Texas Eagle. It was Saturday, and as you can see in the photograph, the weather wasn't the best. The weather on Sunday was even worse, but at least no snow while I was there. I've included some pictures of the station in McGregor. The station is a prefab, wooden Santa Fe station. It was constructed around 1912, and is the oldest station in continuous use in Texas.

The Lawrence Model Railroad Club Train Show and Swap Meet is coming on February 19th. The club will need your and my help to have a successful show. The modules will be moved into Steve's Place on February 13th. On Thursday February 17th, Steve and Jon will pick up the truck and the modules will be loaded. Friday, the club will set up the show at the fairgrounds. Remember that the show is not over until the modules are put away and the truck is returned on Saturday night. The program for the February meeting features planning for the train show. Additionally, Bob Hays from Topeka will present on molds and mold making.

Since no one has told me to stop, I've included the second in a series on hand laying turnouts. This month, I cover making the point rails and notching the stock rails.

Gregory Ohlmacher
Newsletter Editor

Next Meeting: February 8, 2011, 7:30 P.M. at Steve Meseraull's house, 1111 E 1400 Rd.

Lawrence Model Railroad Club Minutes

January 11, 2011

President Steve Meseraull called the January meeting of the Lawrence Model Railroad Club to order at 7:30 pm at Steve's home. The Treasurer's report indicates we have \$5949.91.

Jim Taylor made a report on the status of the show. Flyers have been distributed. Jim will contact cable TV about an advertisement.

The schedule for the show will be as follows:

- 2/13 Move modules for HO and N out of storage to Steve's Place (weather permitting.)
- 2/17 Pick up the truck and load modules.
- 2/18 Move modules to fairground and setup.
- 2/19 Show
- 2/19 Tear down and move back to storage after show

Mike Tomei commented about the Tulsa Layout and Operations weekend meeting in March. The meeting will have three operating session times with operations on a number of local layouts and a day of workshops on layout design. The operating sessions are open for anyone interested in operating on a layout. Experience not needed. See the website <http://ldopsigmeet.tulsanmra.org/> for more information

The existing officers were reelected for another year. The officers and chairs for 2011 are the following:

President	Steve Meseaull
Vice-president	Everett McGaugh
Secretary	Jon B. Ardahl
Treasurer	Jim Ballinger
Show Chair	Jim Taylor
Newsletter Editor	Greg Ohlmacher
Program Chair	Jim Ballinger

The casting presentation that had been scheduled was cancelled because of weather and will be rescheduled.

The alternative program by Jim Ballinger was a presentation on Model Railroader's website where they have an index of magazine articles.

The meeting was adjourned at 8:35 pm.

Jon B. Ardahl
Secretary

2011 Sponsors: Checkers Grocery, Evans Design, BPL Brassworks, Micro Trains, Ram Track, Blair Line, Tomar, Kalmbach, Blair Line, Woodland Scenics, Georges Hobby Shop, California Roadbed Co. Northeastern Scale Lumber, Rix Products, Plastruct, Ron's Books.
Flyers donated by Toto Trains

Saturday February 19, 2011 9:00 AM to 5:00 PM



Club layouts in HO & N Scale, an HO switching layout, and GeoTrax layout

**Douglas County
Fair Grounds
Building 21
2120 Harper
Street
Lawrence, Ks**

**2 Blocks North of
K-10 on Harper**

The Lawrence Model Railroad Club Supporting the L.I.N.K. Food Pantry present: The 10th annual Train Show and Swap Meet

Try your skills at the switching layout designed after the "John Allen Switching layout".

Door prize drawings are held throughout the event, silent auctions, model contests.

View Model Railroad craftsmanship on club layouts, shop for trains and supplies for your layout.

Listen for the conductor to shout "ALL ABOARD!"

**The horn blasts and steam engines whistle, hear the sound and realism
of DCC sound locomotives!**

**Lawrence Model Railroad helps support the L.I.N.K. Inc Food Pantry.
Admission is \$6.00 at the door. Children 12 and under with adult are free.**

Canned food donations valued at \$1.00 or more will receive an admission discount of \$1.00 for each person.

35 + vendor tables full of trains, trains, and more trains! Concessions stand available.

For Show information and vendor tables please contact:

www.lawrencemodelrailroadclub.org

or, LMRC Show Coordinator Jim Taylor: 785-841-6256, or jimforegolf@hotmail.com

Trackwork: Turnout Points and Stock Rails

Gregory C. Ohlmacher

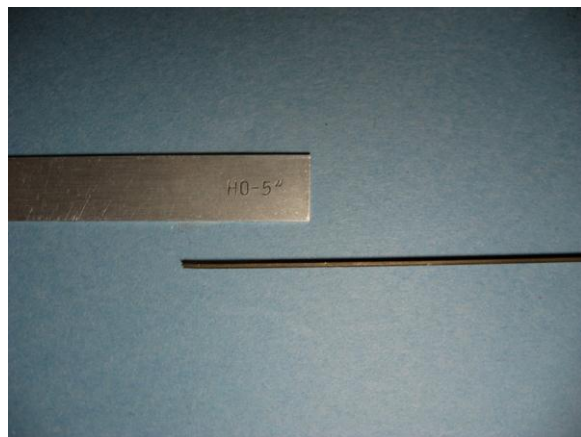
Last month, the topic was the construction of turnout frogs. In my mind, constructing frogs is the



hardest part of hand laying a turnout. Before actually starting building the turnout, two additional specialized rails are needed: point rails and notches in the stock rails or outer continuous rails through the turnout. The tools needed for this project include needle nose pliers and files. A vise, straight edge, razor saw, and miter box are also helpful.

Point rails are constructed in the same manner as the points of a frog. The first step is to create a slight bend at the end of the rail. As I explained last month, this only needs to be enough to file the railhead down to the web. The photograph (below left) shows the bent rail that has been filed straight. When constructing the point of the frog, the bottom flange

of the rail was also filed straight. With the point rail, the bottom flange can be filed, but it is not required for smooth operation.



The second step is to file the bottom flange and railhead on the opposite side of the rail into the web to make the actual point of the point rail. This is the side of the rail that rests against the stock rail. A turnout template can be used to determine the length of rail that needs to be filed. Use long file strokes to create a gradual taper along the rail and use a straight edge or straight rail gauge to be sure that the taper is smooth and gradual. The above right photograph shows the point rail after the rail has been filed to a gradual taper.

If this point rail is straight, then the point rail is complete. However, the turnouts on my layout have at least one curved point rail and the wye switch has two curved points. For the curved point rails, gently

bend the point rail to match a turnout template or curve easement. Care should be taken to avoid kinking the rail.

Next, a notch must be cut into the stock rail. Start with a long section of rail, and plan the notch in the middle of the rail. The notch shown below was started with a razor saw and a miter box to cut through the bottom flange and railhead just into the web. The web should not be cut all the way through. Again, a turnout template can be used to determine the length of the notch along the rail. Long file strokes should be used to create a gradual taper of the notch. The photograph (below left) shows the notch in the stock rail. The photograph (below right) shows the point rail resting in the notch of the stock rail. The fit appears to be good. Before starting to construct the turnout, be sure to have the correct number of frogs, point rails, notched stock rails and guard rails needed for the turnout. Since guardrails are simple bends in rails, their construction will not be covered in these articles.



Santa Fe Station, McGregor, Texas

Gregory C. Ohlmacher





Lawrence Model Railroad Club Train Show Update

Jim Taylor

Train show update! Our 10th annual train show preparations are almost complete. We have the Topeka HO and N scale club layouts, the Manhattan HO club layout, a personal 4x8 HOn3 layout, and the store layout from Toto Trains all committed to attend, plus the four LMRC layouts. The Topeka N scale will bring their larger layout, and I have asked Manhattan to bring their larger layout. There are 37 vendor tables committed, and money has been received for 30 tables, totaling \$527.00. This is one table and \$15 dollars less than at the February meeting last year. I was only planning on 42 tables total.

We will have cable advertising running starting Sunday 2/13 through Friday 2/18, 25 spots for \$297, and a nonprofit match of 25 spots for \$0.00. These will air on ESPN, Channel 6 news at 6 & 10, and FOX sports. We are also putting a nonprofit page up on Facebook, another low budget way to get the word out to more people!

On Sunday February 13th we will move the layouts to Steve's place to clean and do final prep for the show. We need all hands at the station--the layouts are heavy, and we need lots of pickup truck beds. Bring gloves, stocking caps and stay warm. We will be staging, cleaning, and testing until Thursday.

Have you checked your coupler heights? Decoders programmed? Did you glue that tree back on your module? You should double check your motive power and rolling stock on your home layout. **There is no testing, or programing at the train show!**

Don't forget about dust--one of the top ten things attendees do not want to see. We can't call dust scenery or weathering, unless you are modeling the dust bowl days! We are going to have 600 to 800 people looking at your trains and modeling efforts, please be prepared!

I will have an updated amount of door prizes at the club meeting.

Lawrence Model Railroad Club



This scene was taken of the Lawrence Model Railroad Club HO scale layout at the 2010 Lawrence Model Railroad Club Train Show and Swap Meet. The picture features an abandoned coal plant.

Photograph by Gregory C. Ohlmacher,
LMRR Newsletter Editor

Meetings are at 7:30 P.M. on the 2nd Tuesday of the month.

Lawrence Model Railroad Club
c/o Gregory Ohlmacher
409 Cattleman Court
Lawrence, Kansas 66049